



## WELCOME!

Silverwood Apartments is **the most desired and affordable** community North Arlington, Texas. Bordered by I-30 and HWY 360, it grants **quick access** to the cities of Grand Prairie, Mansfield, Fort Worth, Dallas, Irving, and Grapevine as well as a myriad of fine dining, shopping, parks and entertainment.

This **stunning lifestyle** hosts a pet-friendly community with **large inviting homes**, high-end amenities and renovated apartment features\* that is **just minutes** from UTA, Six Flags, AT&T Stadium and so much more!

Once you take a tour and meet our **professional and friendly staff**, you will be ready to call Silverwood your **home**.

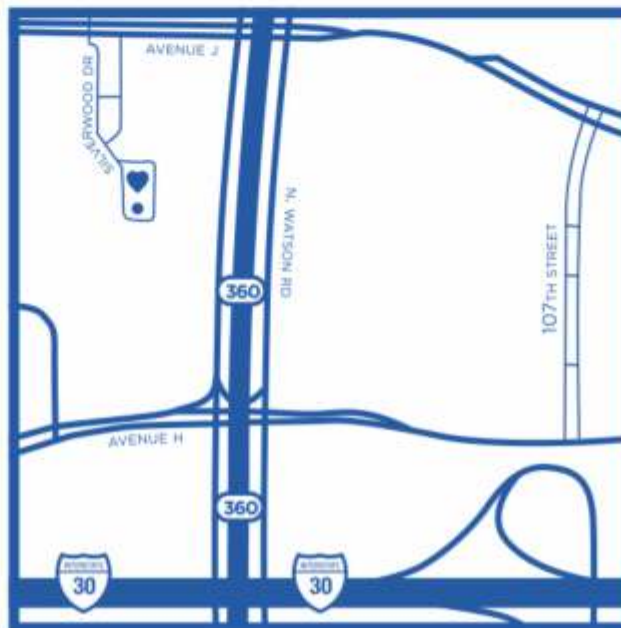
## COMMUNITY AMENITIES

- 24-Hour emergency maintenance
- Courtesy patrol
- Fitness center
- Management and maintenance on site
- Minutes away from DFW International Airport, University of Texas at Arlington, Six Flags, Hurricane Harbor, The Ballpark at Arlington, AT&T Stadium
- Online bill pay and maintenance requests
- Pet-friendly community with on-site pet stations
- Picnic areas with outdoor grills
- Quick access to major thoroughfares
- Resort-style swimming pool

## APARTMENT FEATURES

- 2-inch faux wood blinds\*
- Accent walls
- Black appliances\*
- Ceiling fans with overhead lighting\*
- Dishwashers and microwaves\*
- Full-size washer and dryer connections
- Kitchen pantries
- Linen\* and walk-in closets
- Pass-through bars
- Patios/balconies with outside storage
- Reserved parking
- Updated fixtures\*
- Vaulted ceilings\*
- Vinyl wood floors\*
- Wood-burning fireplaces with mantles\*

ALL SQUARE FOOTAGE IS APPROXIMATE AND IS SUBJECT TO CHANGE. APARTMENT FEATURES MAY VARY BY UNIT. \*ONLY IN SELECT UNITS



**DIRECTIONS:** TAKE I-30 W. TO HWY 360 N. TAKE **EXIT 30** TO **SIX FLAGS DRIVE**. CONTINUE AND TAKE A RIGHT ONTO **N. WATSON RD** THEN LEFT AT **AVENUE J**. TAKE A LEFT ONTO **SILVERWOOD DRIVE**; WE'RE LOCATED ON THE LEFT HAND SIDE

1135 Silverwood Drive, Arlington, TX 76006  
TEL (817) 640-1338 | FAX (817) 633-5103

E [info.silverwoodapartments@wmci.biz](mailto:info.silverwoodapartments@wmci.biz)

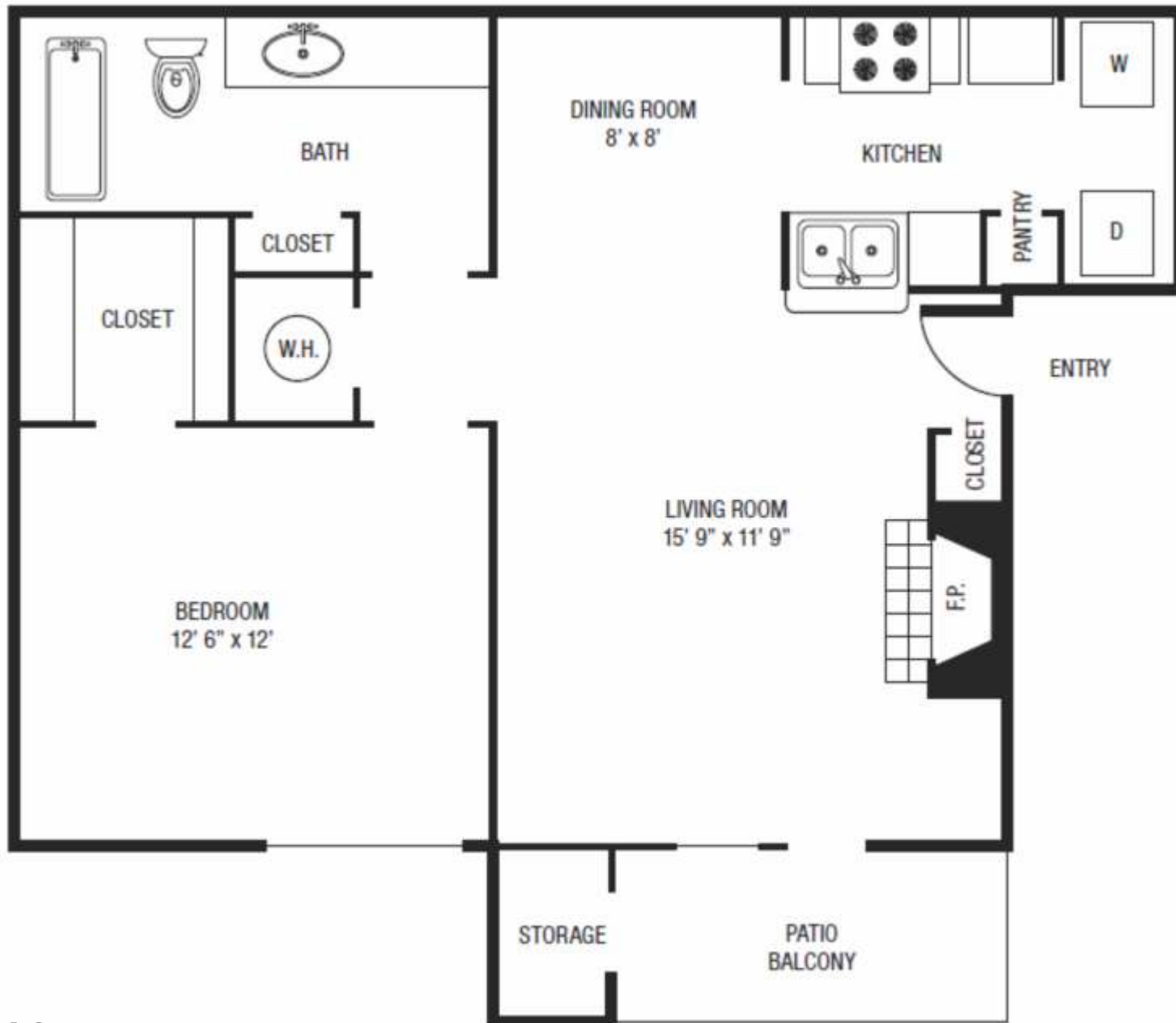
[WWW.SILVERWOODARLINGTON.COM](http://WWW.SILVERWOODARLINGTON.COM)

A **GREAT** PLACE TO CALL **HOME**



SILVERWOOD  
APARTMENTS





## Silverwood A2

One Bedroom, One Bath  
700 Square Feet\*

\*All square footage is approximate only